

### CLEAN, DRAIN, DRY

To prevent the spread of invasive species, it's crucial to wash footwear, boats, & vehicles. Aquatic species like Zebra Mussel larvae can attach to hard surfaces, while others, like Eurasian Water Milfoil, get tangled in propellers & trailers. Species such as the Round Goby can survive in bilge water & ballast tanks, & some hide in dirt or sand on nets & waders. To stop their spread, always Clean, Drain, & Dry between water bodies. Dispose of unwanted bait & fish parts in the trash, & never dump live bait in another waterbody.

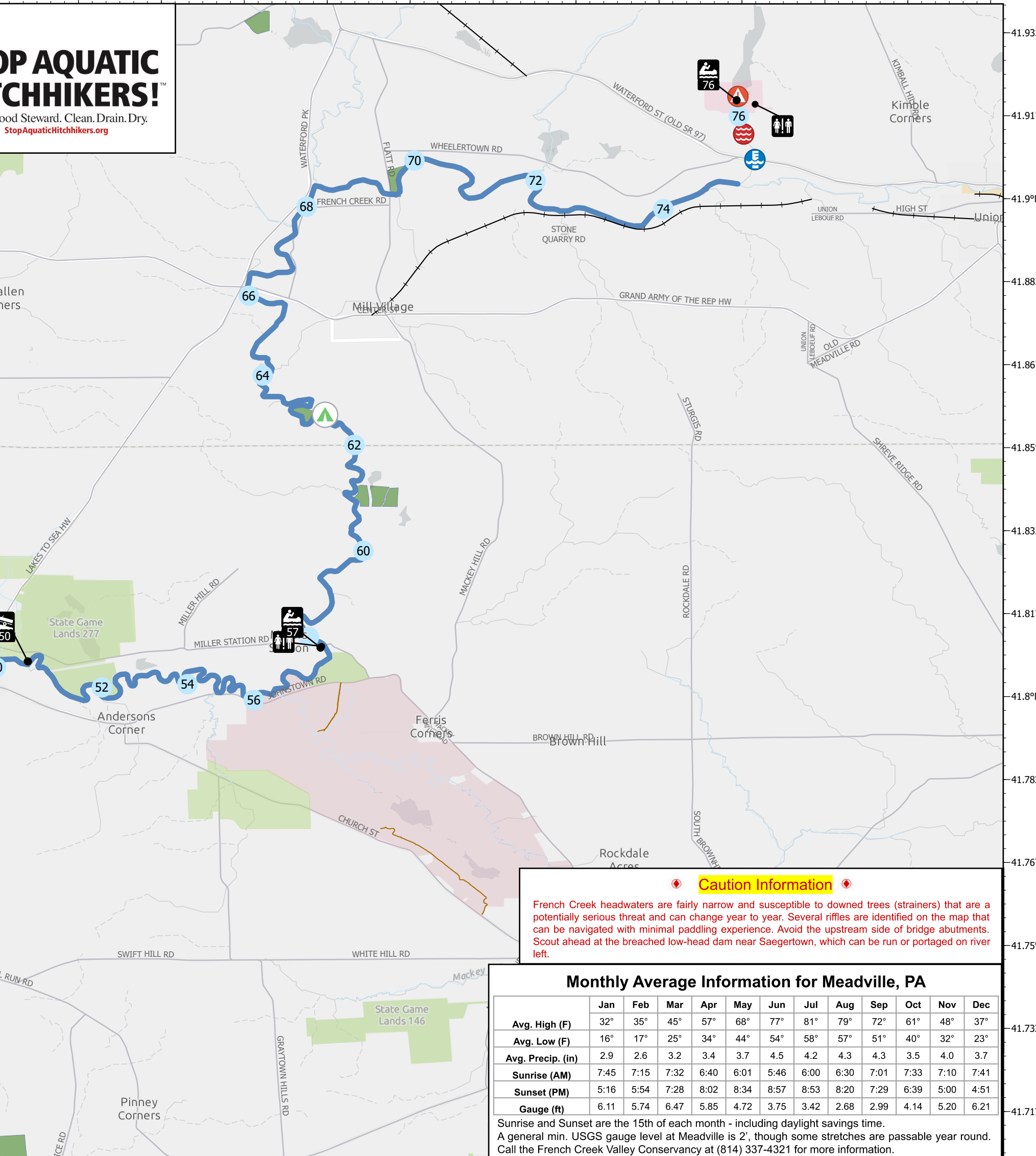
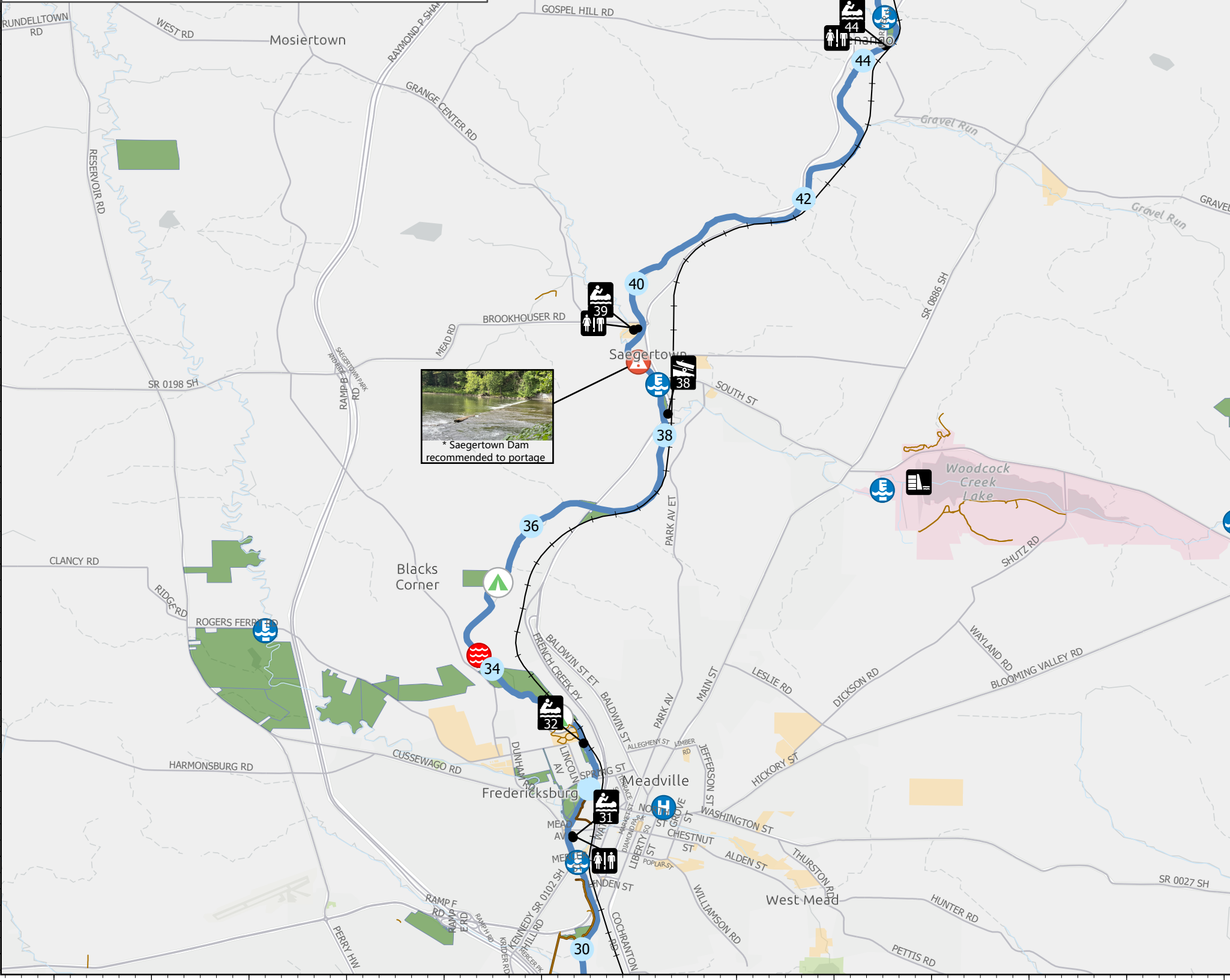
### LEAVE NO TRACE

- Plan & prepare for route, weather, emergencies, etc.
- Utilize established trails & campsites.
- Dispose of waste properly. Pack it in, then pack it out.
- Leave what you find (rocks, plants, natural objects, etc).
- Minimize campfire impacts & extinguish fires completely.
- Respect wildlife; do not feed, follow, or approach wildlife.
- Be considerate of other visitors.
- Respect the privacy & rights of landowners along this trail; assume land is private property unless clearly stated otherwise.

## STOP AQUATIC HITCHHIKERS!

Be A Good Steward. Clean. Drain. Dry.  
[StopAquaticHitchhikers.org](http://StopAquaticHitchhikers.org)

### Legend



**Caution Information**

French Creek headwaters are fairly narrow and susceptible to downed trees (strainers) that are a potentially serious threat and can change year to year. Several riffles are identified on the map that can be navigated with minimal paddling experience. Avoid the upstream side of bridge abutments. Scout ahead at the breached low-head dam near Saegertown, which can be run or portaged on river left.

### Monthly Average Information for Meadville, PA

	Jan	Feb	Mar	Apr	May	Jun	Jul	Aug	Sep	Oct	Nov	Dec
Avg. High (F)	32°	35°	45°	57°	68°	77°	81°	79°	72°	61°	48°	37°
Avg. Low (F)	16°	17°	25°	34°	44°	54°	58°	57°	51°	40°	32°	23°
Avg. Precip. (in)	2.9	2.6	3.2	3.4	3.7	4.5	4.2	4.3	4.3	3.5	4.0	3.7
Sunrise (AM)	7:45	7:15	7:32	6:40	6:01	5:46	6:00	6:30	7:01	7:33	7:10	7:41
Sunset (PM)	5:16	5:54	7:28	8:02	8:34	8:57	8:53	8:20	7:29	6:39	5:00	4:51
Gauge (ft)	6.11	5.74	6.47	5.85	4.72	3.75	3.42	2.68	2.99	4.14	5.20	6.21

Sunrise and Sunset are the 15th of each month - including daylight savings time.  
A general min. USGS gauge level at Meadville is 2', though some stretches are passable year round.  
Call the French Creek Valley Conservancy at (814) 337-4321 for more information.

### French Creek Water Trail Upper Section Public Access Sites

River Miles are used to identify locations of various sites along the creek. River Mile 0 is at the confluence of French Creek and the Allegheny River. "River Left" and "River Right" are used to indicate which side of the stream a site is on. Orient yourself looking downstream to determine left and right. PFBC (PA Fish and Boat Commission) launches require boat registration (other states accepted) or launch permit from a state park office or PFBC.

**Union City Dam**  
Path - River Right

**John Anselmo**  
Paved Ramp - River Right

**Cambridge Springs**  
Paved Ramp - River Right

**Cambridge Landing**  
Paved Ramp - River Right

**Conneautsee**  
Path - River Right

**Karl Gerdon Park**  
Metal Ramp - River Right

**Bertram Park**  
Paved Ramp - River Right

**Saegertown**  
Gravel Ramp - River Left

**Joe Cat Launch**  
Path to Ramp - River Right

**Bicentennial Park**  
Paved Ramp - River Left

Lat 41.919722  
Lon -79.901667

Lat 41.810196  
Lon -79.984505

Lat 41.807222  
Lon -80.043611

Lat 41.805556  
Lon -80.058056

Lat 41.811111  
Lon -80.078889

Lat 41.770556  
Lon -80.110833

Lat 41.722689  
Lon -80.150416

Lat 41.708611  
Lon -80.145833

Lat 41.652211  
Lon -80.160080

Lat 41.637222  
Lon 80.162222

From PA Route 8 in Union City, follow PA Route 97N 2.5 miles. Turn right onto Middleton Road. Turn left at the dam. Go 0.7 miles to launch (drive across the dam to the parking lot on the far side). Carry boat from gate down Gravel Road Hill to water.

From Cambridge Springs North, turn right onto Miller Station Road. Follow for 3.5 miles to the bridge. The parking lot/launch is on the right, just before the bridge. \*Please respect the farmer's fields.

PFBC. Follow US Routes 6E/19N 0.2 miles from the French Creek Bridge in Cambridge Springs, then turn right onto Miller Station Road, follow for 0.3 miles and turn right to access area.

Follow US Routes 6E/19N just past French Creek Bridge in Cambridge Springs. Turn immediate left onto Poplar Street and follow to Hickory Alley. Turn left into the Fireman's Park pavilion parking area. Launch is straight ahead.

From intersection with US Routes 6/19 in Cambridge Springs, follow McClelland Street (SR 1006) 1.3 miles west. Access point is located at the confluence of Conneautsee Creek and French Creek.

From US Route 6 in Venango, turn onto South Street and follow to Karl Gerdon Park and the Venango VFD 25. Park in parking for Karl Gerdon Park and follow path to behind the fire department's building. Downhill path leads to launch site.

From Main Street (US 6/9) in Saegertown, access Bertram Park near the northern Saegertown Bridge on Route 198. Follow the drive to Bertram Park passed the pavilion to the launch site.

PFBC. From the intersection of US Routes 6/19 and PA Route 198 at H&H Market in the center of Saegertown, take US Routes 6W and 19S approximately 0.4 miles heading south. Access directly off US Routes 6/19.

In Meadville from Spring Street, cross the Spring Street Bridge over French Creek. Turn right onto Lincoln Avenue. Follow to the stop sign and turn right onto Rogers Ferry Road. Follow around the curve to Wadsworth Avenue. Launch is on the left. Unload boats and carry in/out only. Park at Wadsworth Church or Lincoln Avenue Ball complex.

From US Routes 6/19 in Meadville, turn west onto Mead Avenue, then left onto French Street (just before Mead Avenue Bridge - look for historic log cabin), then right into the park. Access is straight ahead. Pavilion, picnic tables, kayak/canoe rack, and seasonal restrooms available.